



PILOT GA 1020/1030

Universally applicable automatic spray gun:
The Pilot GA 1030 convinces with excellent atomizing properties and a high-quality spray pattern. The universal spray gun is particularly low-wear and enables process-safe coating in continuous operation

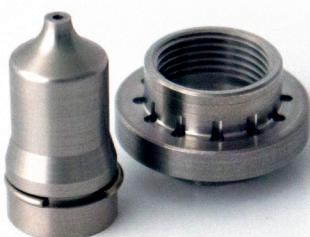


Modular design for all coating requirements

The new gun can be converted into different variants in no time at all. Several air caps and nozzles are available for applying different material.

Flexible application

The PILOT GA 1030 can optionally be supplied with several circulation variants, with and without flushing valve and with various base plates. Optional rear or side connections support optimal movement. In addition, there is version with fixed needle stroke without air valves.



Efficient material use

Overspray and thus material consumption are minimised by the optimised design of the air duct. This allows a transfer efficiency of up to 85 percent to be achieved.

Long life time

Low maintenance costs and minimized downtime due to longlife needles and seals. Thanks to the two-part nozzle, it is sufficient to replace only the nozzle head instead of the complete replace the entire nozzle.



PILOT GA1020/1030

Advantages at a glance

- ✓ Superior coating quality
- ✓ Precisely manufactured air caps optimized for every nozzle and needle size
- ✓ Optimized air duct design
- ✓ Precise adjustment of the material flow via needle adjustment knob
- ✓ Air supply is interrupted automatically during the coating process as soon as the needle closes
- ✓ Large selection of nozzle and needle sizes for: low to high viscosity materials, coatings with high solids content, adhesives and release agents

Our product family



Pilot GM 1030P

Pilot GM 1030G

Pilot GA 1030

Technical Data

Feature	Data
Atomization technology	Conventional HVLP HVLP ^{Plus}
Nozzle size GA 1020 Nozzle size GA 1030	Ø 0.3 - 2.0mm Ø 0.3 - 3.5mm
Material passage	Ø 9mm
Weight	< 650g
Atomization air connection	QS-1/8-8
Control air connection	QS-1/8-6
Material connection	G 1/4"
Air inlet pressure	Max. 8bar (116psi)
Material pressure GA 1020 Material pressure GA 1030	Max. 2.5bar (36.26psi) Max. 8bar (116psi)
Volumetric flow (liter per minute)	Conventional 12-Hole: 387 HVLP: 299 HVLP ^{Plus} : 273
Switching time	20 msec
Max. material temperature	80°C
Max. air temperature	50°C

Lowest total cost of ownership

Lowest spare part consumption

- Needle with wear-resistant and low friction coating
- Optimized, extra durable needle packing
- Two-piece nozzle: Only the nozzle head is exchanged

High product availability

- Long maintenance intervals thanks to long-lasting components
- Fast exchange of wear and spare parts

Savings in material consumption

- Transfer efficiency of up to 88%
- Particularly low paint mist thanks to optimized air channel

Accessories

Spray gun for self-configuration

- Direct mounting or via various adapters
- Back and side connections for flexible hosing
- Internal and external air control
- With or without material circulation
- Dump valve as option
- Fixed needle stroke for external material flow adjustment
- Suitable for robotic

Walther Spritz- und Lackiersysteme GmbH
D- 42327 Wuppertal
T +49 202 787 - 0
www.walther-pilot.de